



**Species:** Red Oak • Hard Maple • Yellow Birch • Hickory • White Oak • White Ash • Tigerwood • American Walnut • American Cherry • Santos Mahogany • Brazilian Cherry • White Pine

Made in Canada 

## Specifications

• Refer to the Mercier product chart for availability of widths and grades of each species.

**Thickness:** 3/4 in. (19 mm)

**Width:** 2 1/4 in. (57 mm)  
3 1/4 in. (83 mm)  
4 1/4 in. (108 mm)  
7 1/4 in. (184 mm, White Pine only)

**Length:** Random lengths  
2 1/4 in. : from 12 in. to 80 in. (300 mm to 2 032 mm)  
3 1/4 in. : from 12 in. to 80 in. (300 mm to 2 032 mm)  
4 1/4 in. : from 12 in. to 80 in. (300 mm to 2 032 mm)  
7 1/4 in. : from 12 in. to 80 in. (300 mm to 2 032 mm)

**Profiling:** Micro V-joint on 4 faces

**Grades:** **Select & Better:** Clear and uniform appearance with slight variations in natural tones  
**Distinction:** Moderate selection of natural tones and character marks  
**Authentic:** Contrasted appearance; pronounced variation between boards and presence of character marks

**Moisture content:** Between 6 and 9 %

## VOC / Formaldehyde

**VOC-free and formaldehyde-free finish:** ASTM D-5116

**GREENGUARD Gold Certification:** All species, widths, colors and finishes.

**Phthalate-free finish:** OSHA method 104

### Maximum GREENGUARD Gold emission criteria

<b>TVOC</b>	≤ 0.22 mg/m <sup>3</sup>
<b>Formaldehyde</b>	≤ 0.0073 ppm
<b>Total Aldehydes</b>	≤ 0.043 ppm
<b>IVOCs</b>	≤ 1/100 TLV et ≤ ½ chronic REL

According to the ASTM D-5116 method

## Finish

**Colors:**  
Refer to the Mercier product chart

### Mercier Generations Finish

Acrylate polymer-based finish consisting of polyurethane and soybean oil UV-cured and reinforced with suspended aluminium oxide particles.



**Gloss:**

			
<b>Semi-gloss</b>	<b>Satin</b>	<b>Matte</b>	<b>Matte-Brushed</b>



**Non-yellowing:** The non-yellowing formula in the finish reduces the natural wood board yellowing process.



**Antimicrobial:** The ULTRA-FRESH™ antimicrobial added to the finish limits the risk of bacteria and mildew growth on the finished surface.

**35-year warranty**  
against finish wear under residential use

**5-year warranty**  
against finish wear under light commercial use

**Structural lifetime warranty**

## Installation



Basement = no  
Floor = yes



Radiant floor = no

### Subfloor

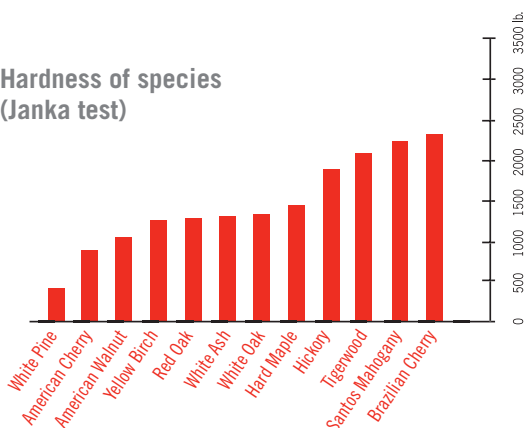
OSB or 3/4 in. plywood:  
joists spaced no more than 19 in. C-C

5/8 in. plywood:  
joists spaced no more than 16 in. C-C



Type of installation:  
Nailed or stapled

Hardness of species  
(Janka test)



**Accessories** Stair nosings • Reducers • Quarter-Rounds  
• T-Mouldings • Flush Mount Air Vents • Thresholds • Touch-up Pens.

## Packaging

		2 1/4 in. (57 mm)	3 1/4 in. (83 mm)	4 1/4 in. (108 mm)	7 1/4 in. (184 mm)
Box	Contents	20 sq. ft. (1.86 m <sup>2</sup> )	22 sq. ft. (2.04 m <sup>2</sup> )	19 sq. ft. (1.77 m <sup>2</sup> )	25 sq. ft. (2.32 m <sup>2</sup> )
	Dimension (W x L x H) - in.	85 x 9 1/2 x 3 1/4	87 x 10 1/2 x 3 1/4	85 x 9 1/2 x 3 1/4	87 x 8 x 5
	Dimension (W x L x H) - cm	216 x 24 x 8	221 x 27 x 8	216 x 24 x 8	221 x 20 x 13
	Weight (approximate)	55-61 lb. (25-28 kg)	55-75 lb. (25-34 kg)	55-61 lb. (25-28 kg)	33 lb. (15 kg)
Pallet	Contents	40 boxes 800 sq. ft. (74.32 m <sup>2</sup> )	40 boxes 880 sq. ft. (81.75 m <sup>2</sup> )	40 boxes 760 sq. ft. (70.61 m <sup>2</sup> )	40 boxes 1000 sq. ft. (92.90 m <sup>2</sup> )
	Dimension (W x L x H) - in.	85 x 38 x 36	87 x 42 x 36	85 x 38 x 36	87 x 40 x 43
	Dimension (W x L x H) - cm	216 x 97 x 91	221 x 107 x 91	216 x 97 x 91	221 x 102 x 8
	Weight (approximate)	2200-2500 lb. (998-1134 kg)	2200-3000 lb. (998 - 1361 kg)	2200-2500 lb. (998-1134 kg)	1350-1640 lb. (612- 744 kg)

## References

- Mercier Wood Flooring Installation Guide Solid
- Mercier Wood Flooring Warranty Document
- Mercier Wood Flooring Maintenance Guide

## Applicable standards

### Surface burning ASTM-E-84

Class C (varies according to wood species)  
Flame Spread Index : 100 to 150  
Smoke Development: 75 to 400 (according to wood species)

### Surface burning CAN/ULC-S102.2

Flame Spread Index (FSR): 130  
Smoke Development (SDC): 95

### Abrasion resistant finish (Taber test)

Nema LD3:1000 cycles

### Static friction coefficient ASTM D2394

Semi-gloss finish: 0.62  
Satin finish: 0.57  
Matte and Matte-Brushed finishes: 0,68

## Certifications

### FSC® certification (RA-COC-003583):

All products in solid wood Maple  
Other certified species available upon request

**Air quality : GREENGUARD Gold certification**  
<http://greenguard.org/en/index.aspx>

**Carb II compliant** : composite wood materials used in GREENGUARD Certified and GREENGUARD Gold Certified flooring products complies with California Air Resources Board Air Toxic Control Measure for Formaldehyde Emissions (CARB ATCM) Phase 2 limits.

### ISO 9001-2008

Origin: Montmagny, Québec, Canada



The mark of responsible forestry

