

Engineered 1/2 6 1/2 in.

1/2 in.
(12,8 mm)



Species: Red Oak • Hard Maple • Hickory
American Walnut • White Oak

Made in Canada 

Specifications

• Refer to the Mercier product chart for availability of widths and grades of each species.

Surface layer: 2.35 mm, thin sawing

Substrate: 8-ply crossed hardwood plywood

Thickness: 1/2 in. (12,8 mm)

Width: 6 1/2 in. (165 mm)

Length: Random lengths
from 16 in.* to 84 in. (300 mm to 2 134 mm)
*may contain occasional 12 in. long wood boards

Profiling: Micro V-joint on 4 faces

Grades: **R&Q** : Clear and uniform appearance; slight variations of natural tones (White Oak only)

Authentic : Contrasted appearance; pronounced variations between boards and presence of character marks.

Moisture content: Between 6 and 9 %

VOC / Formaldehyde

VOC-free and formaldehyde-free finish: ASTM D-5116

GREENGUARD Gold Certification: All species, widths, colors and finishes.

Phthalate-free finish: OSHA method 104

Maximum GREENGUARD Gold emission criteria

TVOC	≤ 0.22 mg/m ³
Formaldehyde	≤ 0.0073 ppm
Total Aldehydes	≤ 0.043 ppm
IVOCs	≤ 1/100 TLV et ≤ ½ chronic REL

According to ASTM D-5116 method

Finish

Colors:

Refer to the Mercier product chart.

Mercier Generations Finish

Acrylate polymer-based finish consisting of polyurethane and soybean oil UV-cured and reinforced with suspended aluminium oxide particles.



Gloss:

60°

30°

10°

10°

Semi-gloss

Satin

Matte

Matte-Brushed



Non-yellowing: The non-yellowing formula in the finish reduces the natural wood board yellowing process.



Antimicrobial: The ULTRA-FRESH™ antimicrobial added to the finish limits the risk of bacteria and mildew growth on the finished surface.

35-year warranty

against finish wear under residential use

5-year warranty

against finish wear under light commercial use

Structural lifetime warranty

Engineered 1/2 6 1/2 in.

Installation



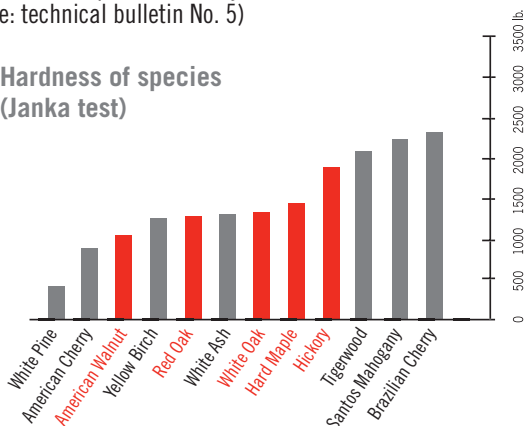
Basement = **yes**
Floor = **yes**



Radiant floor = **yes**

With the exception of Hickory
(See: technical bulletin No. 5)

Hardness of species (Janka test)



Subfloor

- OSB or 3/4 in. plywood: joists spaced no more than 19 in. C-C
- 5/8 in. plywood: joists spaced no more than 16 in. C-C
- Concrete slab



Type of installation:
Nailed or stapled, glued or floating*
*excluding Hickory 6 1/2 in

Applicable standards

Surface burning ASTM-E-84

Class C (varies according to wood species)
Flame Spread Index : 100 to 150
Smoke Development: 75 to 400 (according to wood species)

Surface burning CAN/ULC-S102.2

Flame Spread Index (FSR): 130
Smoke Development (SDC): 255

Abrasion resistant finish (Taber test)

Nema LD3: 1000 cycles

Static friction coefficient ASTM D2394

Semi-gloss finish: 0.62
Satin finish: 0.57
Matte and Matte-Brushed finishes: 0,68

Certifications

FSC® certification (RA-COC-003583):

All products in solid wood Maple
Other certified species available upon request

Air quality : GREENGUARD Gold certification
<http://greenguard.org/en/index.aspx>

Carb II compliant : Composite wood materials used in GREENGUARD Certified and GREENGUARD Gold Certified flooring products complies with California Air Resources Board Air Toxic Control Measure for Formaldehyde Emissions (CARB ATCM) Phase 2 limits.

ISO 9001-2008

Origin: Montmagny, Québec, Canada



Accessories Stair nosings • Reducers • Quarter-Rounds
• T-Mouldings • Flush Mount Air Vents • Thresholds • Touch-up Pens.

Packaging

		6 1/2 in. (165 mm)
Box	Contents	22 sq. ft. (2,04 m ²)
	Dimension (W x L x H) - in.	85 x 7 x 3
	Dimension (W x L x H) - cm	216 x 18 x 8
	Weight (approximate)	38 lb. (17 kg)
Pallet	Contents	60 boxes 1320 sq. ft. (122,63 m ²)
	Dimension (W x L x H) - in.	85 x 42 x 36
	Dimension (W x L x H) - cm	216 x 107 x 91
	Weight (approximate)	2300-2700 lb. (1045-1227 kg)

References

- Mercier Wood Flooring Engineered, Herringbone and LOC Installation Guide
- Mercier Wood Flooring Warranty Document
- Mercier Wood Flooring Maintenance Guide