

Engineered 1/2

3 1/4 in. & 4 1/2 in.

1/2 in.
(12,8 mm)



Specifications

• Refer to the Mercier product chart for availability of widths and grades of each species.

Surface layer: 4 mm, thin sawing

Substrate: 7-ply crossed hardwood plywood

Thickness: 1/2 in. (12,8 mm)

Width: 3 1/4 in. (83 mm)
4 1/2 in. (114 mm)

Length: Random lengths
3 1/4 in. : From 12 in. to 84 in. (300 mm to 2 134 mm)
4 1/2 in. : From 12 in. to 84 in. (300 mm to 2 134 mm)

Profiling: Micro V-joint on 4 faces

Grades: **Select & Better:** Clear and uniform appearance with slight variations in natural tones

Distinction: Moderate selection of natural tones and character marks

Authentic: Contrasted appearance; pronounced variations between boards and presence of character marks.

Moisture content: Between 6 and 9 %

VOC / Formaldehyde

VOC-free and formaldehyde-free finish: ASTM D-5116

Certification GREENGUARD Gold: All species, widths, colors and finishes.

Phthalate-free finish: OSHA method 104

Maximum GREENGUARD Gold emission criteria

TVOC	≤ 0.22 mg/m ³
Formaldehyde	≤ 0.0073 ppm
Total Aldehydes	≤ 0.043 ppm
IVOCs	≤ 1/100 TLV et ≤ 1/2 chronic REL

According to ASTM D-5116 method

Species: Red Oak • Hard Maple • Hickory • American Walnut
American Cherry • Santos Mahogany • White Oak • Brazilian Cherry

Made in Canada* 

Finish

Colors:

Refer to the Mercier product chart.

Mercier Generations Finish

Acrylate polymer-based finish consisting of polyurethane and soybean oil UV-cured and reinforced with suspended aluminium oxide particles.



Gloss:

60°

30°

10°

10°

Semi-gloss

Satin

Matte

Matte-Brushed



Non-yellowing: The non-yellowing formula in the finish reduces the natural wood board yellowing process.



Antimicrobial: The ULTRA-FRESH™ antimicrobial agent added to the finish limits the risk of bacteria and mildew growth on the finished surface.

35-year warranty against finish wear under residential use

5-year warranty against finish wear under light commercial use

Structural lifetime warranty

Engineered 1/2

3 1/4 in. & 4 1/2 in.



Installation



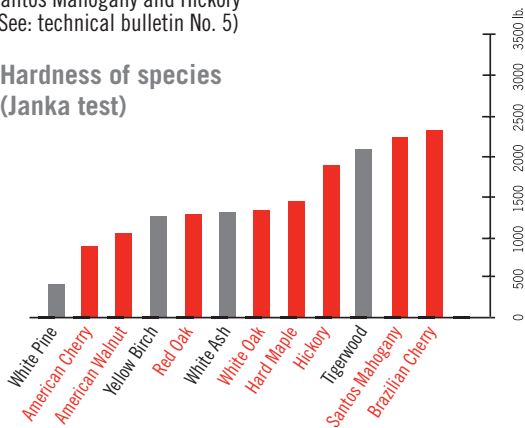
Basement = **yes**
Floor = **yes**



Radiant floor = **yes**

With the exception of Brazilian Cherry, Santos Mahogany and Hickory (See: technical bulletin No. 5)

Hardness of species
(Janka test)



Subfloor

- OSB or 3/4 in. plywood: joists spaced no more than 19 in. C-C
- 5/8 in. plywood: joists spaced no more than 16 in. C-C
- Concrete slab



Type of installation:

Nailed, stapled, glued and floating

Applicable standards

Surface burning ASTM-E-84

Class C (varies according to wood species)
Flame Spread Index: 100 to 150
Smoke Development: 75 to 400 (according to wood species)

Surface burning CAN/ULC-S102.2

Flame Spread Index (FSR): 130
Smoke Development (SDC): 255

Abrasion-resistance finish (Taber test)

Nema LD3: 1 000 cycles

Static friction coefficient ASTM D2394

Semi-gloss finish: 0.62
Satin finish: 0.57
Matte and Matte-Brushed finishes: 0.68

Certifications

FSC® certification (RA-COC-003583):

All products in solid wood Maple
Other certified species available upon request

Air quality : GREENGUARD Gold certification

<http://greenguard.org/en/index.aspx>

Carb II compliant : composite wood materials used in GREENGUARD Certified and GREENGUARD Gold Certified flooring products complies with California Air Resources Board Air Toxic Control Measure for Formaldehyde Emissions (CARB ATCM) Phase 2 limits.

ISO 9001-2008

Origin: Montmagny, Québec, Canada



Accessories

- Stair Nosings • Reducers • Quarter-Rounds
• T-Mouldings • Flush mount air vents • Thresholds • Touch-up Pens.

Packaging

		3 1/4 in. (83 mm)	4 1/2 in. (114,3 mm)
Box	Content	28 sq. ft. (2,60 m ²)	25 sq. ft. (2,32 m ²)
	Dimensions (W x L x H), in in.	87 x 10 1/2 x 3	86 x 9 x 3
	Dimensions (W x L x H), in cm	221 x 27 x 7,6	218 x 24 x 8
	Weight (approximate)	56 lb. (25 kg)	50 lb. (23 kg)
Palet	Content	52 boxes 1 456 sq. ft. (135 m ²)	52 boxes 1 300 sq. ft. (121 m ²)
	Dimensions (W x L x H), in in.	87 x 42 x 42	86 x 36 x 42
	Dimensions (W x L x H), in cm	221 x 107 x 107	218 x 91 x 107
	Weight (approximate)	2 900-3 200 lb. (1 315-1 451 kg)	2 600-3 000 lb. (1 179-1 361 kg)

References

- Mercier Wood Flooring Engineered, Herringbone and LOC Installation Guide
- Mercier Wood Flooring Warranty Document
- Mercier Wood Flooring Maintenance Guide